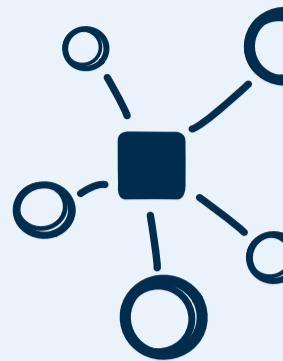


Multi-modal testing in 2020

Evidence supports mixed mode testing.

What is multi-modal testing?

Assessments can be delivered in-person at physical test center locations, virtually with online proctoring, entirely off-line/off-grid, or via any combination of these technologies to meet the specific needs of contemporary testing programs.



Behaviors have changed...

Who uses multi-modal testing?

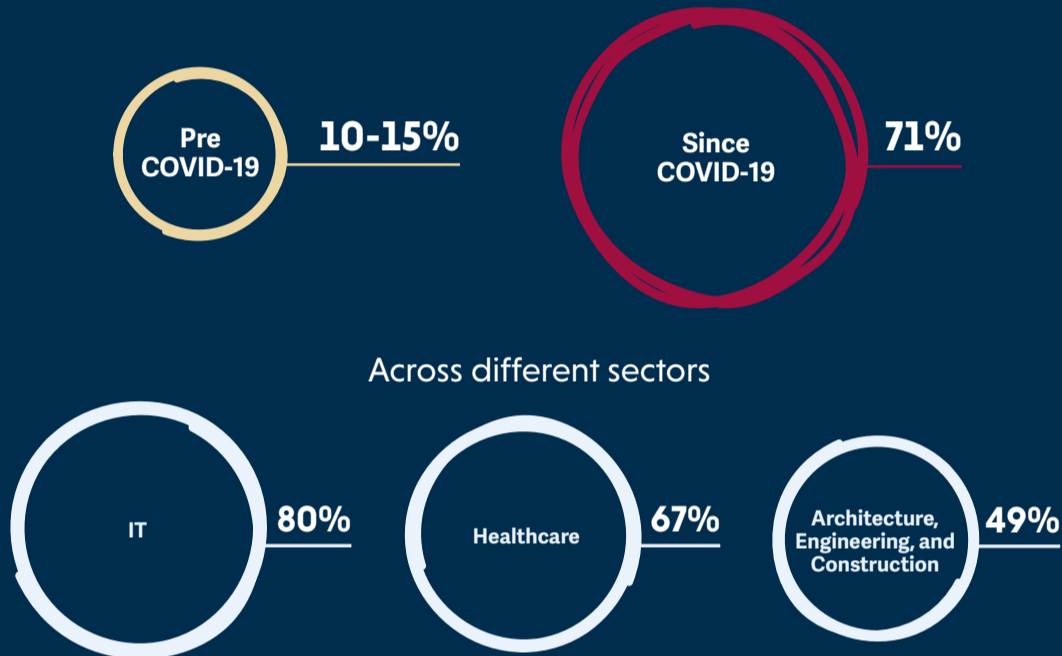
Pre COVID-19

- Primarily IT organizations
- Large global programs
- High-stakes competitive fields

Since COVID-19

- Renowned credentialing organizations are migrating to multi-modal delivery
- All sectors including IT, Healthcare, Finance, Construction, Legal and Admissions
- 35+** PSI has migrated over 40+ organizations to multi-modal testing during 2020

Candidates tested using online proctoring



PSI research since COVID-19

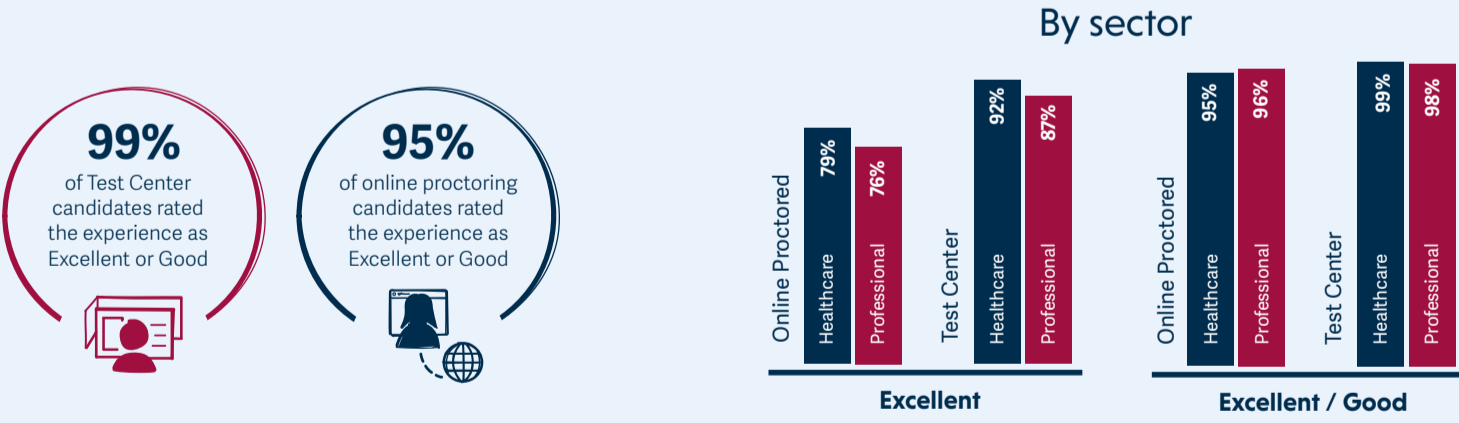
Test location

- 93%** of candidates test from home
- 5%** of candidates test from work
- 2%** of candidates test from other locations

Testing modality has no impact on candidate performance. This reinforces the concept of using various testing modalities in tandem based on program requirements and user preference.

* The figures displayed are percentages of online proctored tests taken.

Candidates want multi-modal testing



The overwhelming majority of candidates are interested in having multi-modal testing options. Satisfaction ratings remain high regardless of modality.

Category	Test Center	Online Proctoring
Proctor/Staff Friendly?	95%	98%
Software Easy?	98%	94%
On-Screen Instructions Easy?	97%	96%
Proctor/Staff Helpful?	97%	96%

What does the data show?

Across online proctored and in-person testing, data forensics showed...

- Comparable mean scores
- Comparable pass rates
- Comparable exam reliabilities
- No increased malpractice

Across online proctored and in-person testing, candidate experience ratings...

- Positive
- Unrelated to mode
- No impact on performance

Learn more about going multi-modal by visiting

psionline.com/certification